



# Quartz

*"I can't  
go back  
to yesterday  
because I was  
a different  
person then".*

*«Alice in Wonderland» Lewis Carroll*

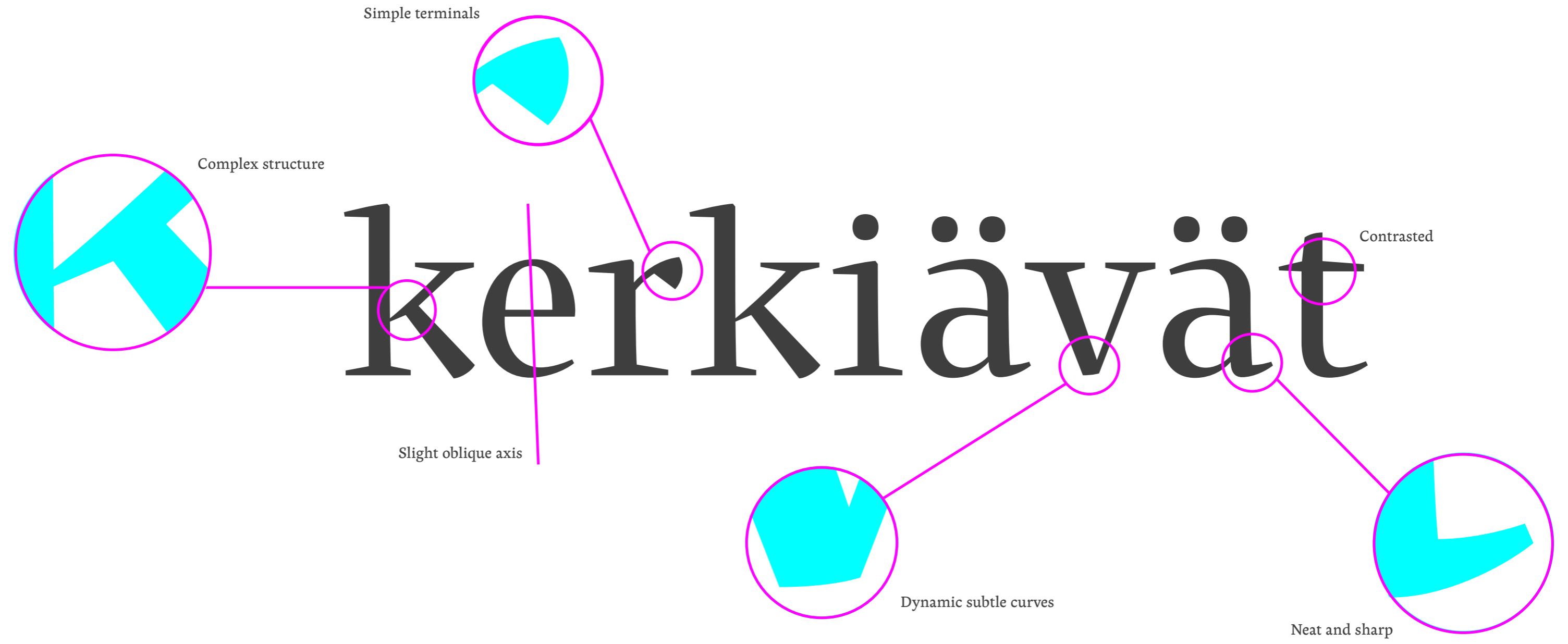
A  
crystal  
clear  
typeface

**Quars** is a text and display typeface family designed to work on magazines. However, it is also suitable for books and other editorial material.

It has a strong personality with elegant, sharp and contemporary features. This typeface comes from several subtle **influences**, from the contrast of the Scotch Romans to the sharpness of contemporary Dutch designers. Quars is a crystal clear and neat typeface full of small details, its structure is bursting with curves and accurate features which gives it its firm personality.

Its italic **experiments** with the boundaries of italics themselves; with just 1 degree of slant Quars Italic accomplishes its purpose of highlighting pieces of text within its Roman. This carefully thought out inclination protects the uppercase from the usual distortion which Italic caps suffer.

It offers a generous glyph set with many ligatures specially crafted for titling and ornaments based on anonymous metal types found in the drawers of an old printing workshop in a coast town near Barcelona. 🍷



# How to Build a Tree House for a Writer

Dorset is a beautiful part of the world. Last week, while the temperature in London crept slovenly higher, a thick and cool fog floated in from the English Channel and swallowed up an oak forest at Hooke Park by the sea where two architects, Nozomi Nakabayashi and Elizabeth Cunningham, are building a tree house for a writer. Inhibited vision and a heightened smell of the woodland indulged the sense that Dorset exists on another plane entirely to the one left behind on the train.

The tree house in question will be suspended from the branch of an oak tree five feet up on a slanted hill over-looking a field filled with deer, and a pond that the writer has built on his land. These two views are precious to him. In a tree house, suspended from the branch of an old oak tree, he will be able to lie flat on his back, as in a bath, he says, and gather inspiration -not to write, but to think. 'The building is a **metaphor** for how their life is' says Nakabayashi.

It will be built using techniques learned in the forest at **Hooke Park**, a place visited often by the writer and where his son has learned similar techniques. Materials used will cause little harm: Douglas Fir from Dorset for the structure and cork and denim for insulation. The tree house is a mixture of poetry and pragmatism. 'I'm not so worried about safety; I want something epic. I don't mind being up there clenching my

buttocks' said the writer and so, **hanging** from the branch of an old oak tree, on a hill where the ground feels like it is falling away, it is epic and quiet and still. At the base of the tree house is a covered perch where the writer's dog can come to rest, marking the realisation of the project's most important feature. 🐾

«**Jeannette Farrell** discovers a nest suspended from the branch of an old oak»

1° 1° 1° 2° 1,5° 1° 1° 1,5° 2° 1,5° 2° 2°

nest from the branch of an old oak



LIGATURES

fi

Off with their heads! ▶ Off with their heads!

DISCRETIONARY LIGATURES

ſt

which way (...) ▶ which way (...)

LOCALISED FORMS

§

Il·lusió ▶ Illusió  
Băştinaşă ▶ Băştinaşă  
ÖĞRENİM HAKKI ▶ ÖĞRENİM HAKKI

SMALL CAPS

aA

"have i gone mad? ▶ "HAVE I GONE MAD?

CAP SPACING

HI

I'M AFRAID SO, (...) THE BEST  
PEOPLE USUALY ARE ». ▶ I'M AFRAID SO, (...) THE BEST  
PEOPLE USUALY ARE

CASE SENSITIVE FORMS

(H)

«WHO IN THE {WORLD} AM I?» ▶ «WHO IN THE {WORLD} AM I?»

SUPERIORS

n<sup>1</sup>

n<sup>2</sup> 1<sup>st</sup> ▶ n<sup>2</sup> 1<sup>st</sup>

INERIORS

n<sub>2</sub>

H<sub>2</sub>O 1<sup>ni</sup>l ▶ H<sub>2</sub>O 1<sup>ni</sup>l

FRACTIONS

3/4

1/2 ℓ ▶ 1/2 ℓ

LINING FIGURES

H3

0123456789\$€£¥ ▶ 0123456789\$€£¥

TABULAR LINING FIGURES

1

0123456789\$€£¥ ▶ 0123456789\$€£¥

TABULAR OLD STYLE FIGURES

1

0123456789\$€£¥ ▶ 0123456789\$€£¥

STYLISTIC SET 01 - ARROWS

→

abcdef ▶ →←↑↓↖↗

STYLISTIC SET 02 - HANDS

☞

abcdef ▶ ☞☞☞☞☞☞☞

STYLISTIC SET 03 - ORNAMENTS

☞

abcdefg ▶ ☞☞☞☞☞☞☞

STYLISTIC SET 04 - FRAMES

☞

abcd ▶ ☞☞☞☞

Letterjuice

© 2021 | LETTERJUICE LTD. ALL RIGHTS RESERVED  
[www.letterjuice.cat](http://www.letterjuice.cat)

Typefaces Quars Regular, Italic, Bold  
and Black and Baldufa Regular designed  
by Letterjuice.

**Text used** in page 6-7 of this brochure  
comes from an article published in The  
Plant Journal on the 7th of August 2013.